

# UNI-9



Supported by **UTMOST CAPACITY** of ISHIDA  
(ALL ISHIDA)

WEIGH

PACKAGE

INSPECT

DISPLAY

SELL

# Whatever you make, make certain.

By listening to and building trust with our diverse customer base over the years, ISHIDA has created a large number of price computing scale printer variations, taking into account the different features required by the variety of customer types within the retail industry.



12.1 in  
Color LCD  
touch panel

7 in  
Color LCD  
display



Bench type



Self-service type



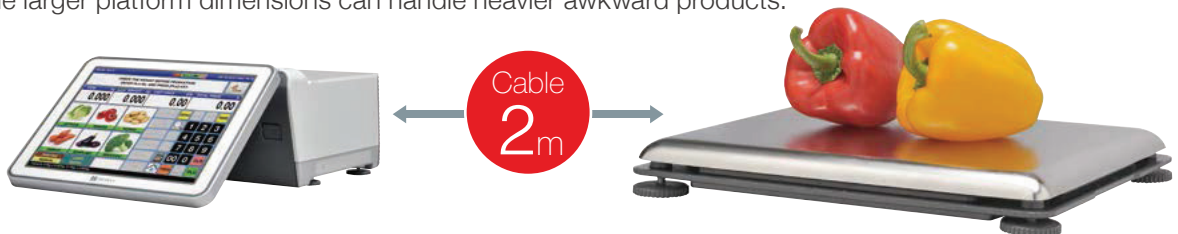
Elevated type





# COMPACT

UNI-9's compact design fits nicely on virtually any counter size, big or small, and occupies a very small footprint. The optional remote platform creates the flexibility to construct an efficient and ergonomic working environment on counters where space is limited. In addition the larger platform dimensions can handle heavier awkward products.



## REMOTE PLATFORM



# IMPACT

The UNI-9 can either be equipped with a 7 or 12.1 inch customer display with LED backlight technology.

Vivid images and interactive movies are created by the combination of the stunning, crystal sharp display and the PC-BASED platform, all designed and built in Japan.



LCD display



**UNI-9** LED backlight display



ISHIDA with more than 120 years experience in the retail & industrial scale business provides the UNI-9 operator with a fast and user-friendly operation.

# DIVERSE

The UNI-9 will print true type font thanks to its PC based system. This provides attractive, clear and legible text in flexible label format designs. It will, of course, be able to print the mandatory regulatory information such as: product name, amount, bar code, date, country of origin, nutrition ingredient labeling and allergy information etc.

- Uses high density thermal head
- Able to customize for additional true type font

\*Contact Ishida agent for details.

## Printing samples

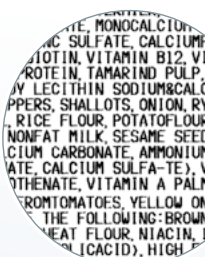


Price label

Supports various fonts



Price and nutritional information label



Clear and vivid even for the smallest character



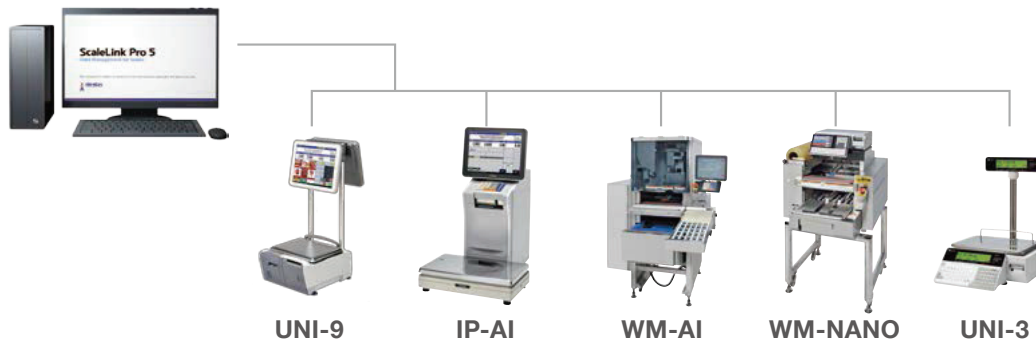
Ingredients information label

Linerless labels available



# LINK

ScaleLink Pro 5 (SLP-5) is a powerful server/client PLU management Windows based PC software. It completes the UNI-9 series and takes it to new heights. The SLP-5 software, the 5th generation of the ScaleLink family software, is freely configurable to make it as simple as possible to the end-user to keep data up-to-date and synchronized on all scales in the system. Supporting mdb or SQL type databases, the GUI is by far one of the most user-friendly software in the retail scale business.



## GREEN

### Energy**DOWN**↓

Solid State Drive (SSD) with no mechanical movement eliminates hard disk failure and consumes less battery power.



### Waste**DOWN**↓

The linerless label, with zero backing paper, enhances the environmentally friendly corporate image and responsibility.



### Lead**FREE**

All UNI-9 models fully comply with RoHS regulations thus making it total lead free.



## OPTIONS

Various optional peripherals are available including, exchangeable cassette, allowing for different label sizes and/or formats of up to 7 types. Wi-Fi device for remote network is also available as a factory fitted option.



Scanner



Cassette



External printer



Mobile printer



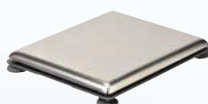
Drawer



Port guard



Remote scale (30kg)



Remote scale



Large tray



Wi-Fi device



Scale connection cable (2m)



SD card

# LINEUP



On the show case  
**Bench type (B)**  
Customer display 7 inch



For the back room  
**Bench type (BP)**  
No customer display



Just to print  
**Bakery type (XL)**  
No customer display / No scale



For classic trading  
**Hanging type (H)**  
Customer display 7 inch



On the show case with large display  
**Short pole type (SP)**



Inside of show case display on top  
**Elevated type (EV)**



Inside of show case  
**Pole type (P)**



For fruits & vegetable  
**Self-service type (SS)**



Limited space use  
**Compact operator display type (DB)**  
Operator display 8.4 inch

Design and specifications are subject to change without notice.

**ARMAGH**  
POS Solutions

180 Dundurn Street South | Hamilton, ON L8P 4K3  
toll free: 888.528.5903 | fax: 905.528.3394  
www.armaghpos.com  
sales@armaghpos.com