

ECRS Catapult Membership Server

The ECRS Catapult Membership Server (CMS) gives cooperatives and membership-based stores streamlined control over their member programs by tracking vital information in real time right from the point of sale. Member discounts can be calculated by price level, subtotal discounts, or both. Any number of member class profiles can be set and customized for greater versatility with member programs. CMS lets the cashier know the customer's account status immediately with an integrated interface that never requires leaving the point of sale. CMS provides integrated POS security for adding members, paying fees, refunding accounts, and more. Administrative rights are password protected and allow users with the proper security level to edit price levels, membership fees, joining fees, payment frequency and just about every other aspect of member accounts. A powerful reporting engine provides information vital to cooperative and member-based programs.



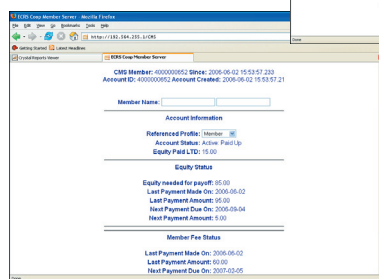
“ECRS came to the table and addressed the complexities and uniqueness associated with our organization's need for a viable membership management solution. Historically speaking, our member stores have tried many different strategies to manage membership processes over the years, but have had little success finding a sustainable solution. With CMS, ECRS has created a product that can solve this long existing operational challenge.”

- Karen Zimelman
Director of NCGA's Western Corridor

- Register New Members On The Fly at the POS
- Track Member Patronage
- Calculate Equity In Real Time
- Family Member Level Tracking
- Robust Linux Server Architecture
- POS Environment Integration
- User-Based Security Access
- Browser-Based Administration
- Detailed Back Office Reporting
- Profile-Based Discounts
- Pre Pay Fees
- Price Level Discounts
- Subtotal Discounts



SEE ENLARGED
SCREENSHOTS
ON NEXT PAGE



Plug and Play Integration

Upon licensing the CMS module, users simply make the appropriate selections in Catapult and the ECRS Catapult Membership Server is automatically integrated into Catapult's POS interface. CMS provides users all of the information that they need at the touch of a button.

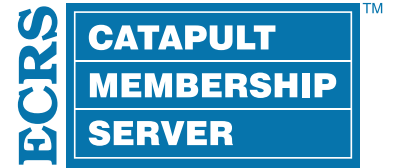
Browser Based Administration and Reporting

CMS Maintenance leverages modern web-based technology that allows users to manage profiles and accounts, and get up-to-the-second reports from anywhere with an internet connection.



ECRS | Catapult Membership Server

| Member Name | Family Affiliation | Member Profile | Member Status |
|---------------------------------------|--------------------|-------------------------|--|
| Pat Connor | Connor443200018473 | Member | Active: Paid Up |
| Equity Status: Current | | Paid LTD: \$5.00 | Fee Status: Current |
| Last Payment 06/06/2006 \$5.00 | | Needed: \$95.00 | Last Payment 06/06/2006 \$10.00 |
| Next Payment 07/07/2006 \$5.00 | | | Next Payment 07/07/2006 \$10.00 |



CMS Member Information Dashboard

CMS Point-of-Sale Interface

CMS Add Member Screen

Add Coop Member

Member ID:
 Prefix:
 First/Middle:
 Last Name:
 Suffix:
 Alias:
 Notes:

☐ Family Affiliated
 Family Affiliation: Search

☒ Account Affiliated
 Account Name:
 Membership Profile:

☐ Account Profile
 Joining Fee
 Member Fee
 Equity Fee
 Price Level
 Discount

Save Cancel

CMS Point-of-Sale Interface

Corrections... Exit POS
 Maint. Mode
 Item Search Customer Lookup Log Out Cashier
 Suspend / Resume
 Depart Sale Produce \$5
 \$10
 Coupons Discounts \$20
 \$50
 TOTAL Tender

Subtotal \$0.00 7 8 9 Clear
 Tax \$0.00 4 5 6 OK
 Total Due \$0.00 1 2 3 Enter Item
 Tendered \$0.00 0 00 Qty

0 Blair, Tim Price Level 2 Sales 6/6/2006 11:03 AM

CMS Change Member Information Screen

ECRS Coop Member Server - Mozilla Firefox

File Edit View Go Bookmarks Tools Help
 http://192.564.255.1/CMS

Getting Started Latest Headlines

Crystal Reports Viewer ECRS Coop Member Server

CMS Member: 4000000852 Since: 2006-06-02 15:53:57.233
 Account ID: 4000000852 Account Created: 2006-06-02 15:53:57.21

Member Name: Pat Connor

Account Information
 Referenced Profile: Member
 Account Status: Active: Paid Up
 Equity Paid LTD: 15.00

Equity Status
 Equity needed for payoff: 85.00
 Last Payment Made On: 2006-06-02
 Last Payment Amount: 95.00
 Next Payment Due On: 2006-09-04
 Next Payment Amount: 5.00

Member Fee Status
 Last Payment Made On: 2006-06-02
 Last Payment Amount: 60.00
 Next Payment Due On: 2007-02-05

ECRS Coop Member Server - Mozilla Firefox

File Edit View Go Bookmarks Tools Help
 http://192.564.255.1/CMS

Getting Started Latest Headlines

ECRS CATAPULT MEMBERSHIP SERVER

Logout

CMS Maintenance

Create Membership Profile

Profile Name:
 Discount Choices: No Discount
 Price Level: No Price Level

Equity Information
 Equity Enabled: ☐
 Maximum Equity:
 Payment Amount:
 Payment Interval: Monthly

Membership Fee Information
 Membership Fee Enabled: ☐

CMS Create Member Profile Screen